

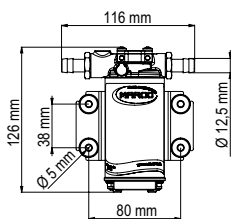


12V and 24V - DC

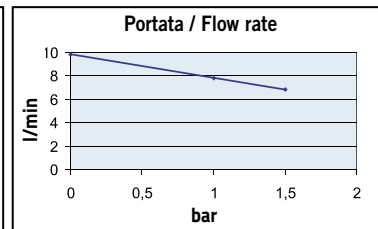
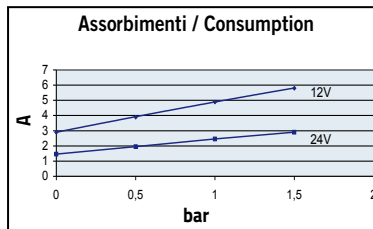
UP2



12V
24V



Dim. 126 x 116 x 76 mm



PORTATA
FLOW RATE
max.
10 l/min
2.6 gpm

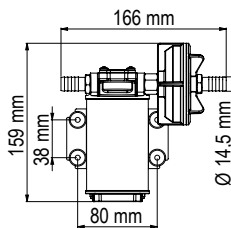
PRESSIONE
PRESSURE
max.
1,5 bar
22 psi

CODICE PART NUMBER	VOLTS	ADESCAM. SELF-PRIM. m	CONS.	MOTORE MOTOR	FUSIBILE FUSE	TUBO TUBE	BOCCHE PORTS	PESO WEIGHT
164 200 12	12	1,5	3A	90W	5A	12 mm	3/8" BSPP	1,2 kg
164 200 13	24	1,5	1,5A	90W	3A	12 mm	3/8" BSPP	1,2 kg

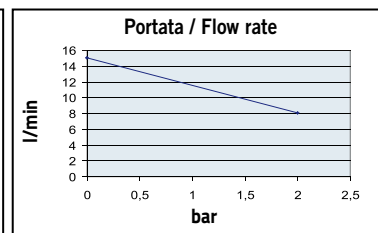
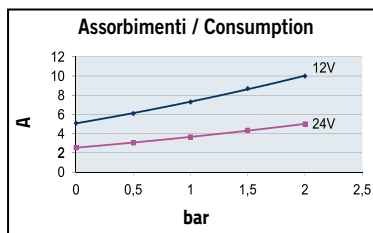
UP3



12V
24V



Dim. 159 x 166 x 101 mm



PORTATA
FLOW RATE
max.
15 l/min
4 gpm

PRESSIONE
PRESSURE
max.
2 bar
29 psi

CODICE PART NUMBER	VOLTS	ADESCAM. SELF-PRIM. m	CONS.	MOTORE MOTOR	FUSIBILE FUSE	TUBO TUBE	BOCCHE PORTS	PESO WEIGHT
164 000 12	12	1,5	6A	120W	10A	13 mm	3/8" BSPP	1,4 kg
164 000 13	24	1,5	3A	120W	5A	13 mm	3/8" BSPP	1,4 kg

UP3-CK

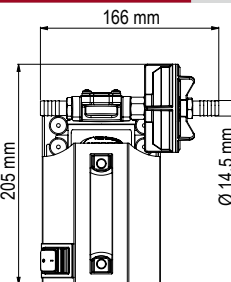
On/Off switch



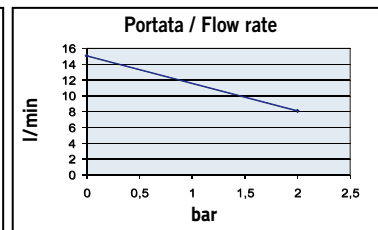
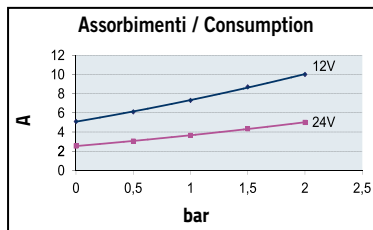
PORTABLE KIT WITH ON-OFF SWITCH



12V
24V



Dim. 205 x 166 x 141 mm



PORTATA
FLOW RATE
max.
15 l/min
4 gpm

PRESSIONE
PRESSURE
max.
2 bar
29 psi

CODICE PART NUMBER	VOLTS	ADESCAM. SELF-PRIM. m	CONS.	MOTORE MOTOR	FUSIBILE FUSE	TUBO TUBE	BOCCHE PORTS	PESO WEIGHT
164 006 12	12	1,5	6A	120W	10A	13 mm	3/8" BSPP	2,8 kg
164 006 13	24	1,5	3A	120W	5A	13 mm	3/8" BSPP	2,8 kg