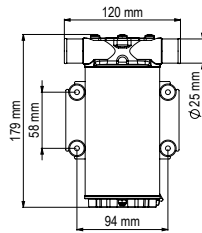


WATER AND FLUIDS TRANSFER PUMPS

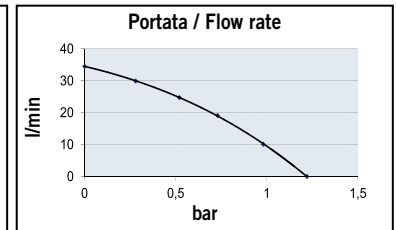
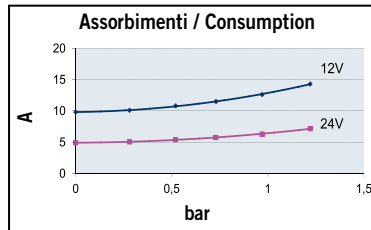
UP1



12V
24V



Dim. 179 x 120 x 94 mm



PORTATA
FLOW RATE
max.
35 l/min
9.2 gpm

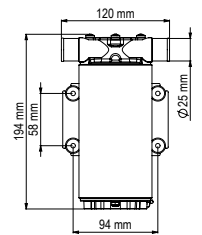
PRESSIONE
PRESSURE
max.
1,2 bar
17.4 psi

CODICE PART NUMBER	VOLTS	ADESCAM. SELF-PRIM. m	CONS.	MOTORE MOTOR	FUSIBILE FUSE	TUBO TUBE	BOCCHIE PORTS	PESO WEIGHT
162 002 12	12	1,5	10A	180W	20A	25 mm	1/2" BSPP	2,9 kg
162 002 13	24	1,5	5A	180W	15A	25 mm	1/2" BSPP	2,9 kg

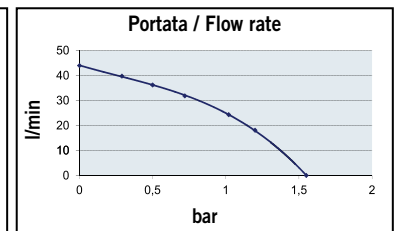
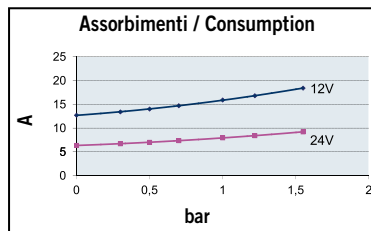
UP1-M



12V
24V



Dim. 194 x 120 x 98 mm



PORTATA
FLOW RATE
max.
45 l/min
11.9 gpm

PRESSIONE
PRESSURE
max.
1,5 bar
21.8 psi

CODICE PART NUMBER	VOLTS	ADESCAM. SELF-PRIM. m	CONS.	MOTORE MOTOR	FUSIBILE FUSE	TUBO TUBE	BOCCHIE PORTS	PESO WEIGHT
162 006 12	12	1,5	14A	360W	20A	25 mm	1/2" BSPP	4,1 kg
162 006 13	24	1,5	7A	360W	15A	25 mm	1/2" BSPP	4,1 kg

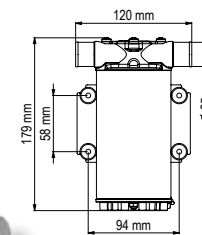
UP1-B

NEW

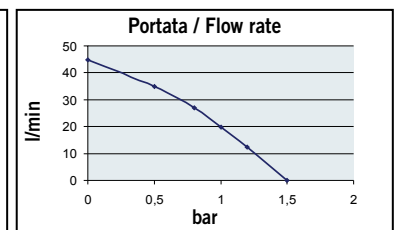
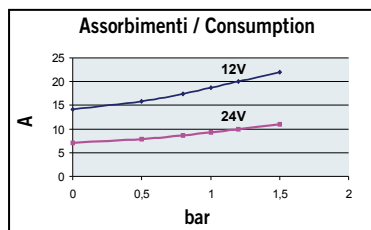
IDEAL FOR BALLAST APPLICATION



12V
24V



Dim. 179 x 120 x 94 mm



PORTATA
FLOW RATE
max.
45 l/min
11.9 gpm

PRESSIONE
PRESSURE
max.
1,5 bar
21.8 psi

CODICE PART NUMBER	VOLTS	ADESCAM. SELF-PRIM. m	CONS.	MOTORE MOTOR	FUSIBILE FUSE	TUBO TUBE	BOCCHIE PORTS	PESO WEIGHT
162 003 12	12	1,5	10A	180W	20A	25 mm	1/2" BSPP	2,9 kg
162 003 13	24	1,5	5A	180W	15A	25 mm	1/2" BSPP	2,9 kg